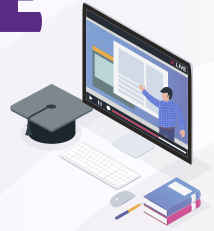




ONLINE PROGRAM COST OF ATTENDANCE



Direct Costs of Attendance

per semester

Examples:

6
Credit
Hours

$$6 \text{ credit hours} \times \$350 = \text{\$2,100 per semester}$$

12
Credit
Hours

$$12 \text{ credit hours} \times \$350 = \text{\$4,200 per semester}$$

**Tuition: \$350 per credit hour
no additional fees**

Types of Financial Aid

Financial aid awards are per year and dependent on enrollment status. Award amounts may vary based on registered credit hours. Wesleyan does not offer institutional scholarships for Online students.

Full-Time status required

No minimum credit hours required

Half-Time status required

Estimated State Aid

State aid amounts shown are based on the 2025-2026 academic year as the 2026-2027 amounts have not yet been announced. Official award amounts for 2026-2027 may differ.

State Aid

GA Tuition Equalization Grant (GTEG) \$1,100

\$1,100

| HOPE Scholarship

\$2,985 | \$5,970

| Zell Miller Scholarship

\$2,985 | \$5,970

Federal Aid

Pell Grant

Varies, up to \$7,395

Supplemental Educational Opportunity Grant (SEOG)

Varies, up to \$2,000

Federal Student Loans (Subsidized & Unsubsidized)

\$5,500 - \$12,500 per year

Parent PLUS Loan (for Dependent Students Only)

Varies, up to Cost of Attendance

Applying for Aid

Federal aid requires a completed FAFSA each year. Federal grants and Subsidized loans are dependent on financial need while Unsubsidized loans and Parent PLUS Loans are not.

Outside/Private Aid

Outside Scholarships

Varies

Private Loans

Varies

SCAN HERE!



Contact Financial Aid!

onlinefinaid@wesleyancollege.edu